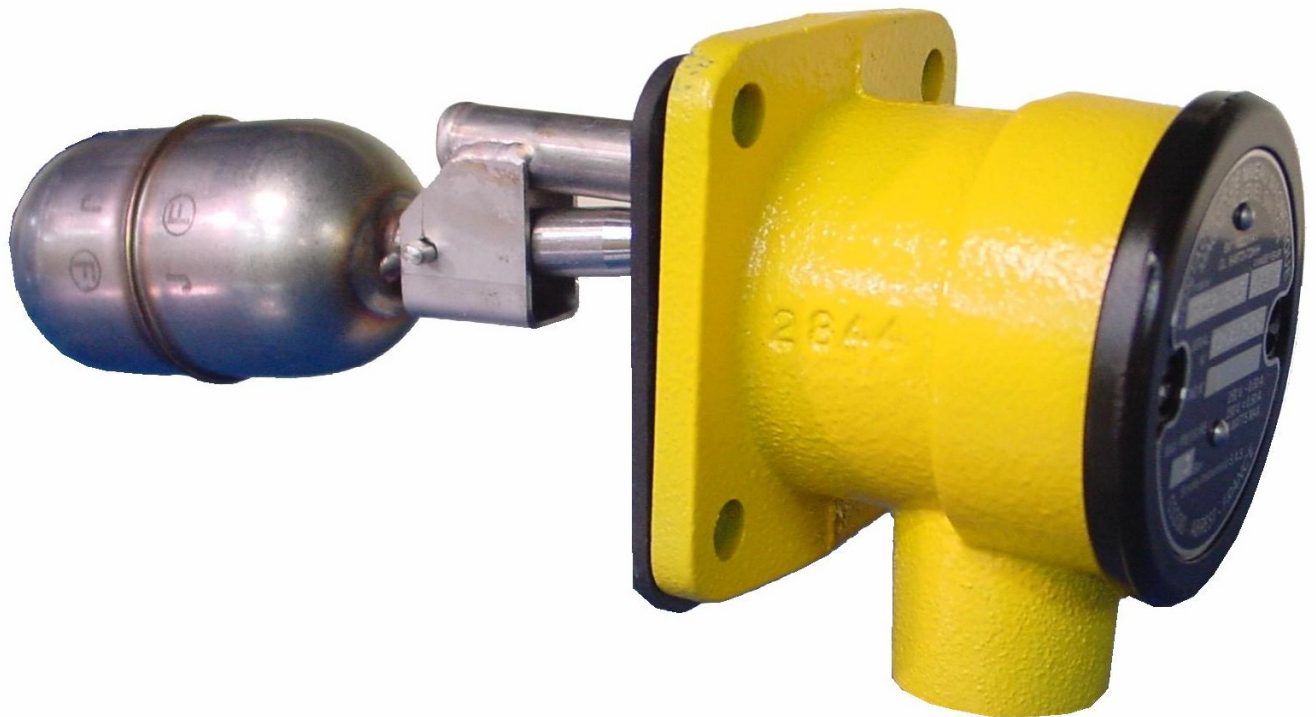




Horizontal magnetic level switches

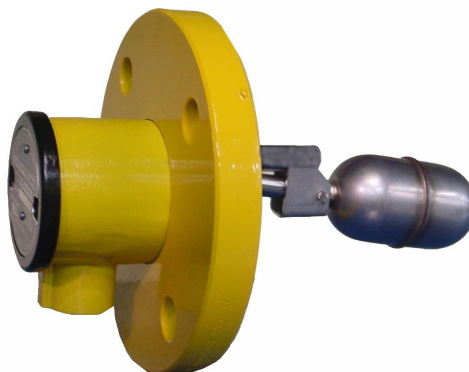
S3XX Series



S3XX series

Features

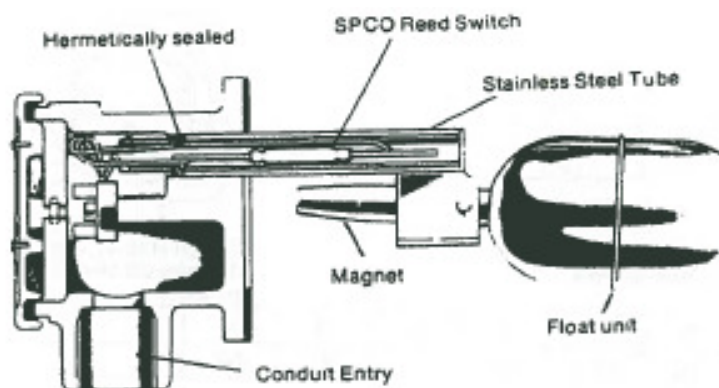
- Snap action switching**
- Robust Construction**
- Simplicity & reliability**
- National approvals**
- International flanges**



Description

Switches comprise a float unit and flanged switch body – the float unit carries a permanent magnet.

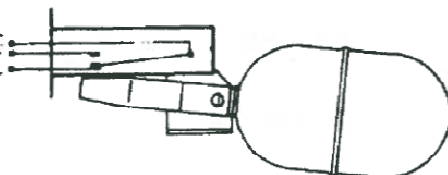
A Stainless Steel tube is fixed to the flange and encloses a single pole, mechanically biased, changeover reed switch, hermetically sealed into the Stainless Steel tube.



Horizontal level switch

STANDARD SWITCH ACTION/CHARACTERISTICS

- Red — Supply
- Blue — Normally Open
- Black — Normally Closed

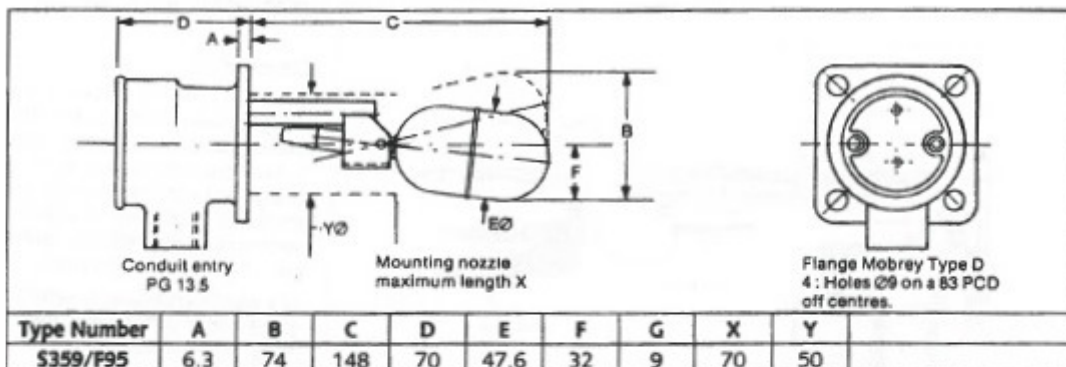
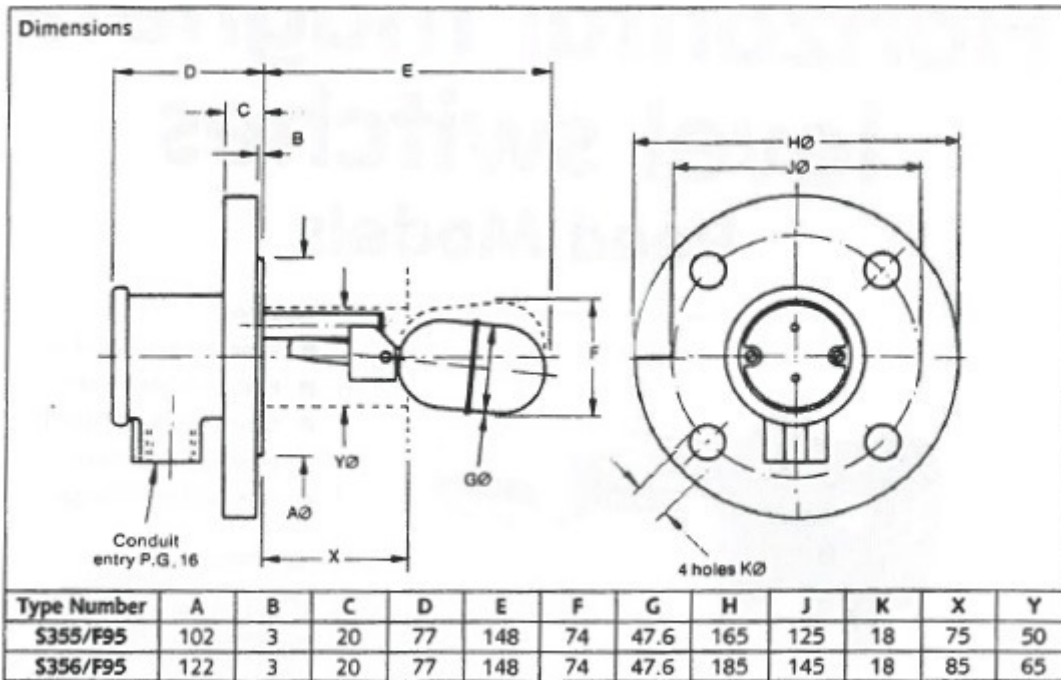


Black and Red make on falling level; Terminal connections: 6 BA screws.
Blue and Red make on rising level.

The single pole changeover reed switch has the following current ratings:

A.C.	D.C.
250V 0.25A	100V 0.25A
10 VA Maximum	10 Watt Maximum

The Reed Switch is hermetically sealed for intrinsically safe circuitry. The switch must not be used for the direct starting of motors and the contacts should be wired in series with the relay coil of a contactor starter.



Type Number	Type Flange	Working Conditions			Construction		
		Maximum Pressure Bars	Maximum Temp ° C	Minimum S.G.	Switch Body	Flange	Tube & Float
S355/F95	DN 50 PN 16	Intermediate pressure Temperatures coincide with the rating for A.F.N.O.R. E.29—283 Flange PN 16.	15.5 at 150° C	0.5	Aluminium Alloy	Carbon Steel	Stainless Steel 316
S356/F95	DN 65 PN 16		16.0 up to 120° C				
S359/F95	Mobrey 'D'		2.5 bar at 135° C 30 bar at 100° C		Cast Iron	Cast Iron	Cast Iron

Sales Contact:

@ : contact@houdec.com

Tel : 04 70 59-81-81

Technical Contact:

Stéphane Gaillard
Technical Manager

@ : stephane.gaillard@houdec.com

Tel : 04 70 59 56 73

After Sales Service:

Cedric Aubert
Service Technician

@ : cedric.aubert@houdec.com

Tel : 04 43 47 44 63

